

Parent's and Carers'
guide to



Firfield Primary School

Firfield Avenue, Breaston, Derbyshire, DE72 3EG

Website: www.firfield.derbyshire.sch.uk

Email: enquiries@firfield.derbyshire.sch.uk

Head Teacher: James Yellop

Contents Page

Key Information	Page 3
Welcome to our school by our Headteacher	Page 4
A message from the Chair of Governors	Page 5
Vision and Values	Page 6
Mission and Aims	Page 7
Our School Rules	Pages 8-9
Our School Site	Pages 10
Our Knowledge Rich Curriculum	Pages 11-12
Knowledge Organisers	Page 13
Starting School and Admissions	Pages 14-15
The School Day	Page 16
School and Local Authority Policies	Pages 17-18
General Information	Pages 19-22
Travel Plan	Page 23
Home School Partnership	Pages 24
Parent Teacher Association	Page 25
Term Dates 2023-2024	Page 26
Term Dates 2024-2025	Page 27



Key Information:

<i>Address</i>	<i>Firfield Avenue Breaston Derbyshire DE72 3EG</i>
<i>Telephone</i>	<i>01332 872216</i>
<i>Age Range</i>	<i>4-11</i>
<i>Ofsted Rating</i>	<i>Good (May 2023)</i>
<i>Number on roll</i>	<i>416 pupils</i>
<i>Chair of Governors</i>	<i>Victoria Beardmore</i>
<i>Head Teacher</i>	<i>James Yellop</i>
<i>Deputy Head Teacher</i>	<i>Adam Thurgood</i>
<i>Assistant Head Teacher</i>	<i>Rachel Tittershill</i>
<i>SENCO</i>	<i>Lauren Trigg</i>
<i>School Business Manager</i>	<i>Bella Neasham</i>



Welcome to Our School



Dear Parents and Carers,

I would like to take this opportunity to welcome you and your family to Firfield Primary School.

We are delighted that you are considering or have decided to join our school community and hope very much that you and your children will be very happy at the school. The information in this prospectus is designed to give you a good insight into the life of the school. However, we are always willing to take on board any comments or ideas to further develop our prospectus information, so if you have any suggestions, please let us know!

Additional information is also available on the school's website. The address is: www.firfield.derbyshire.sch.uk

We look forward to working in close partnership with you on your child's educational journey.

Mr James Yellop

Headteacher

A message from the Chair of Governors



On behalf of the Board of Governors of Firfield, I would like to extend a very warm welcome to all new pupils and families.

As a governing body we provide both support and challenge to Mr Yellop, the senior leadership team, and all staff, to ensure that every child within the Firfield family has the opportunity to thrive and to “be brilliant every day.”

We are all invested in the success of our pupils, and we are proud of the hard work that happens every day both in and out of school, for we realise that an integral part of allowing every pupil to release their inner superhero is support from parents, carers, and families. We all share the same goal; that our children enjoy their time at school in a safe and nurturing environment, and that they are supported in their learning and personal development as they progress through the school.

Wishing you all the absolute best for what, I am confident, will be a wonderful time for you and your children as part of the Firfield family.

Victoria Beardmore

Our Vision

Our school vision is to empower everyone to be brilliant every day, having ambition and freedom to release their inner superhero, embracing new challenges with drive and determination. We inspire extraordinary learners, by fostering a love and thirst for new skills and knowledge. We encourage our school community to grow and nurture the personal qualities necessary to live happy and successful lives that are both fulfilling and rewarding. Our ambition is to ensure everyone can confidently thrive and flourish to achieve their personal best in everything they do.

Our Values

The governors, staff and children at Firfield Primary School want all members of the Firfield Family to grow and nurture the following values...

Compassionate, Caring and Kind

Honest and Trustworthy

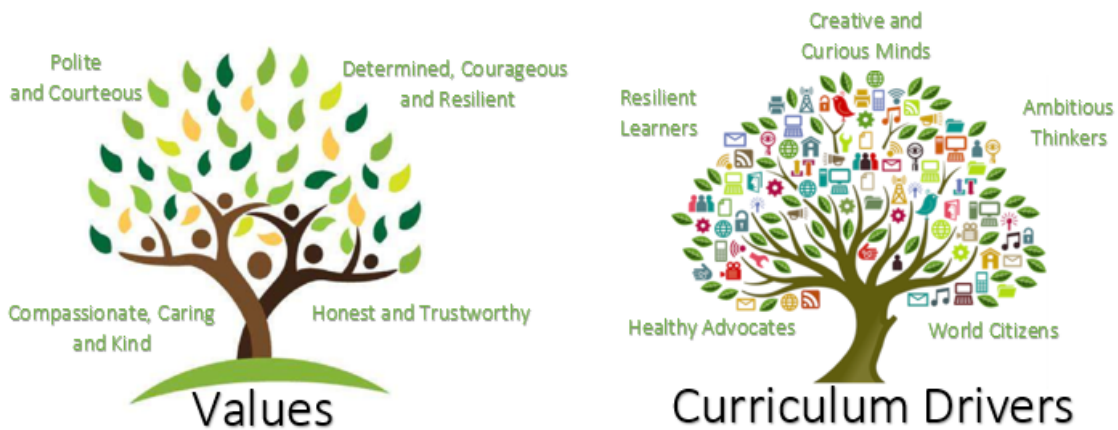
Polite and Courteous

Determined, Courageous and Resilient

Learn Together – Grow Together – Achieve Together



Our school vision is to empower everyone to be brilliant every day, having ambition and freedom to release their inner superhero, embracing new challenges with drive and determination. We inspire extraordinary learners, by fostering a love and thirst for new skills and knowledge. We encourage our school community to grow and nurture the personal qualities necessary to live happy and successful lives that are both fulfilling and rewarding. Our ambition is to ensure everyone can confidently thrive and flourish to achieve their personal best in everything they do.



Mission and Aims

At Firfield Primary School, we aim to develop happy, independent learners with a lifelong curiosity, enquiring minds and desire to learn. We aim to offer an exciting, creative curriculum full of enrichment, through which we aim to develop confidence, resilience and encourage personal challenge. Through collaborative and active learning we want our children to grow together and be confident to achieve their ambitions.

We will 'Learn Together' by:

- *Learning to support and respect each other, to understand our differences and treat others how we would like to be treated.*
- *Being ready to learn, be engaged in the curriculum and have a thirst for new skills and knowledge.*

- Learning to be safe, everyone acts in a safe manner and the environment is a safe space to learn and grow.

We will 'Grow Together' by:

- Building an open and welcoming community where each person feels valued.
- Growing into Firfield citizens, developing personal qualities such as confidence, resilience and ambition.
- Creating a climate that is supportive of all members of our community.

We will 'Achieve Together' by:

- Fostering positive attitudes to learning and high expectations of all members of our community.
- Using a variety of teaching and learning approaches that show respect and acceptance of each pupil's uniqueness.
- Ensuring that our attitudes and values are transmitted through the curriculum.

Our school rules are - Ready, Respectful, Safe

At Firfield Primary School high expectations of learning, behaviour and **respect** for each other underpin everything we do. We want our pupils to be **ready** to learn and to be **safe** at all times. Our staff strive to create independent, articulate thinkers and learners who have confidence to achieve their ambitions.

These rules are underpinned by our use of SLANT, SHAPE AND STEPS which we use to make every second count, communicate clearly and confidently, and to meet and greet.



At Firfield Primary School we
make every second count!

We take every opportunity to
learn.

We remember to:

- S Sit up
- L Listen
- A Ask & Answer questions
- N Never interrupt
- T Track the speaker

Learn Together, Grow Together, Achieve Together



At Firfield Primary School we
communicate clearly and confidently.

We always treat members of our
school community with *respect.*

We remember to:

- S Sentences
- H Hands away from face
- A Articulate
- P Project
- E Eye contact

Learn Together, Grow Together, Achieve Together



At Firfield Primary School we
Meet and Greet
one another each day.

We remember to:

- S Sir / Miss
- T Thank you
- E Excuse me
- P Please
- S Smile

Learn Together, Grow Together, Achieve Together

Our school rules encompass everything that we do.

For example:

Be **ready** to listen in the classroom and around school; be **ready** for school - uniform and PE kits; be **ready** to learn - in school on time and here every day.

Be **respectful** - listen carefully to others and expect to be listened to; use kind and thoughtful words; look after the building, displays, resources and equipment and represent the school in a positive manner.

Be **safe** - be in the right place at the right time; keep hands, feet, objects and personal comments to yourself. Follow the rules when using the internet or electronic equipment both in and out of school and report any problems to an adult.

The school aims to provide a happy, friendly atmosphere. To this end, children are expected to be polite and considerate. They are

encouraged to help each other and respect both their own property and that of others. Children are also expected to contribute to the general appearance of the school by helping to keep it neat and tidy and taking pride in its appearance.

A high standard of work is the aim for all children and they are expected to work hard to achieve this end. Parents are considered to be fundamentally responsible for their children's behaviour and therefore should be aware of, and included in, the school's behaviour policy.

It is also important to note that every child will start each new school day with an unblemished record!

Mrs Tittershill is the School Lead on Behaviour.



Our School Site

Currently, the school is divided into three blocks within the site. The Reception classes have access to their own play area which is used daily. These classrooms and outside play area, along with the administration block, were opened in September 2012.

The infant children are taught in a well-presented block of four classrooms on the school site and have access to the outdoor area. The school has invested in an outdoor learning area which is used across the school to enhance the children's learning including a trim trail and tyre park.

The older children are generally taught in the oldest part of the school which dates back to 1913. This part of the building has wonderful character and classrooms are well presented and equipped.

The school is also very fortunate to have a memorial wildlife garden on site which is well used across many areas of the curriculum.

The school itself has fourteen classrooms. All classrooms are equipped with an interactive white board. A new school library was added to the school's facilities in 2013 and we are currently in the process of extending this. There are also three small teaching rooms which are available and are used for small group work, reading activities and music lessons across most days.

The hall is well equipped for P.E. and drama. It is also used for assemblies, concerts and lunchtime dining.

We are very fortunate in having an incredibly active Parent / Teacher Association which raises funds for the school and therefore makes a valuable contribution to the school's policy of providing the pupils with the best possible resources and care. Recently, they have raised funds for refurbishing the hall and the year before purchased a class set of i-pads along with a trolley.

We offer wrap around provision through a breakfast and after school club (WRAP Club) which operates from 7:30am - 6:00pm.



Our Knowledge Rich Curriculum

In 2021, we began to redesign our curriculum based on the latest research into cognitive science. We have planned our ambitious, knowledge rich curriculum around our school vision and our curriculum drivers.

Learn Together – Grow Together – Achieve Together



Our school vision is to empower everyone to be brilliant every day, having ambition and freedom to release their inner superhero, embracing new challenges with drive and determination. We inspire extraordinary learners, by fostering a love and thirst for new skills and knowledge. We encourage our school community to grow and nurture the personal qualities necessary to live happy and successful lives that are both fulfilling and rewarding. Our ambition is to ensure everyone can confidently thrive and flourish to achieve their personal best in everything they do.



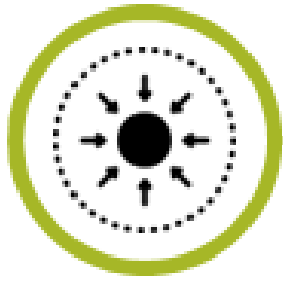
Values



Curriculum Drivers

Mr Thurgood is the school lead on the Quality of Education, and each subject is led by our curriculum leaders. If you have any questions about our curriculum, please see our website or speak to Mr Thurgood.

At Firfield, we place powerful knowledge at the very heart of our curriculum. We want to teach our children the very best of what has been thought and said. When developing our curriculum, we have thought meticulously about what we teach using the latest findings from cognitive research to ensure that the knowledge we teach is specified, sequenced and remembered.



Specified



Sequenced



Remembered

A knowledge rich curriculum exposes children to ambitious content that enables all children to be provided with the opportunities to succeed throughout their time at Firfield and in later life. Through explicit teaching, the use of knowledge organisers, spaced retrieval, formative 'low-stakes' quizzing and plenty of practice, we have developed a curriculum to develop knowledge fluency that goes beyond the National Curriculum. This ensures that our pupils secure a solid base to build on as they move through school and into Key Stage 3 and beyond.

At Firfield, we recognise and promote the identity of the individual subjects we study. We aim to foster a love for subjects which will flourish as the children progress through the curriculum. We want the children to know what it is to be a historian or a scientist, and to develop the background knowledge and disciplinary skills to become the historians, artists, designers, scientists and geographers of the future.

More information about our curriculum can be found on our website.



Knowledge Organisers

At Firfield Primary School, we use Knowledge Organisers (KOs) in class and as homework to help children to learn the essential knowledge they need for some of the topics they study. A KO sets out in detail what we want children to know by heart by the end of the topic. We expect the majority of children to be able to recall all of the information on the KO by the end of the unit of work. The children will be tested on these in class each week to help them remember what they are learning.

Geography

South America

Pangea	A supercontinent that broke apart 175 million years ago forming the continents we recognise today
Rainforest	A dense forest, rich in biodiversity, that is often found in tropical areas that receive high levels of rainfall
Subduction Zone	An area where one tectonic plate is being forced under another, often creating mountain ranges
Plateau	A flat area of land with high altitude
Altitude	The height of a location, often relative to sea level
Deforestation	The process of removing forest
Biodiversity	The variety of plants and animals within a habitat



THE INCA EMPIRE

Location	Dates	Language and Communication
The Inca Empire spread along the Pacific coast from Ecuador to Chile.	Began in 1000 CE Reached its height in 1532 Disappeared in 1533	Quechua (South-west) the ancestral Inca language, spread across the empire, to encourage unity of communication. Glyco (Maya) - good lengths of knotted string, used to keep records and pass messages through the empire.

Atacama Desert
A desert plateau in South America located along the Pacific coast, west of the Andes Mountains. The Atacama Desert is the driest non-polar desert in the world.

Factors leading to Amazon forest fires: dry weather with little rain, deforestation and logging, slash and burn forest removal.

Art

Still Life and Form

Still life	A picture of something that does not move
Form	Form means the 3d shapes in art. In a drawing or painting an artist can create the illusion that an object is 3d rather than flat.
Tone	How dark or light something is . Tones are created by the way light falls on a 3d object
Shade/Shadow	The parts of an object that are darker
Highlight	The parts of an object where the light is strongest or lightest
Mid-tone	Tones between the highlights and shadows
Cast shadow	Where an object makes a shadow on something else e.g. a table underneath it
Cross hatching	A technique of creating tone by drawing lines which cross over each other
Tints/Shades	A tint is the mixture of a colour with white, which increases lightness , and a shade is the mixture of a colour with black, which reduces lightness



Still Life with Peaches and a Glass (1610 CE)



Still Life, Pitcher and Fruit (1894)
Paul Cezanne



Still Life with Five Objects (1934)
Georgia Morandi

World War I



Imperialism	When a country increases its power and influence by colonising (taking over) another country
Alliance	A union or relationship formed between countries/ organisations , to benefit them both
Mechanised warfare	The use of armoured fighting vehicles in modern warfare. Sometimes referred to as 'armoured' or 'tank' warfare
Chemical warfare	The use of the toxic chemicals to kill or injure enemies. In WWI, Chlorine, Phosgene and Mustard Gas were used
Trench warfare	Where opposite sides of the war fight from trenches dug into the ground, facing each other
No Man's Land	The land between the trenches of opposing armies
Home Front	The Home Front refers to life in Britain during WWI
Conscription	A law that says that if you are able to fight in the war, you have to. During WWI, for 1916, all men aged 18-41 had to go to war and fight for their country.
Armistice	An agreement made to stop fighting a war , also referred to as a 'truce'

The war was fought between:

The Triple Alliance: Germany, Austria-Hungary, Italy

The Triple Entente: France, Britain, Russia

On our website, there is more information about how we use Knowledge Organisers with a presentation to parents. There are also Knowledge Organisers to view in the Year Group Pages section of our website.



At the beginning of each term, we also send out a pack of Knowledge Organisers for each year group to parents and carers.



Starting School and Admissions

Admission Procedures

The planned admissions level for our Reception classes is 60. We admit children into school in September each year.

There is a co-ordinated scheme for admissions to Primary Schools which is run by Derbyshire County Council. It is a requirement that parents apply directly to the County Council and give three preferences for their choice of schools. The required admissions application is to be submitted during the period November - January before the year in which your child is due to start school. The County Council will then consider all applications and try to allocate parents their first choice if possible. Parents are then informed in April as to which school their child has been allocated a place.

We hold regular school tours for prospective parents. Please visit our school website for further information or speak to a member of the Firfield team by telephone to arrange to visit the school.

Mid-Year Admissions

Should your child already be in full time education and you are looking to move him/ her to Firfield Primary School, please contact admissions at Derbyshire County Council.

Transfer to Secondary School

Applications for Secondary School are to be made online at:
www.derbyshire.gov.uk

We work closely with our local secondary schools to ensure the transition from Year 6 to 7 runs smoothly and that the children feel safe and secure in their new school. Our main feeder secondary schools are Wilsthorpe, Friesland and Trent College.

The School Day

Morning Sessions

9.00 a.m.- 12.20 p.m. (KS1)

9.00 a.m.- 12.00 p.m. (KS2)

Afternoon Sessions

1.20 p.m. - 3.30 p.m.(KS1)

1.00 p.m. - 3.30 p.m (KS2)



All pupils should be on the main school playground ready to line up for 8.50 a.m. Pupils should be accompanied by a parent/carer who is responsible for them until they are handed over to the teacher at 8.55 a.m.

Older children can walk to and from school, but we would ask that this is only the case for children in the summer term in Year 5 and across Year 6. Children will NOT be permitted to collect and walk their younger siblings home.

Parents are asked not to bring cars onto site since parking/turning space is limited and emergency access must be available at all times. In fairness to local residents, it is hoped that parents will show consideration when parking near the school at the start and end of the school day. Where possible, parents are advised not to park on Firfield Avenue. In the interests of Health and Safety, parents are asked to walk their children to and from school wherever possible.

There are facilities for children to leave scooters and bikes at the school, but we would ask that all children have helmets to wear and do not ride these on the playground either before or after school.

School and Local Authority Policies

The school has a very comprehensive range of policies and guidance which has been developed and adopted by the Governing Body of the school. It is not possible to reproduce all of the policies for the purpose of this prospectus, but the following information may be of interest. Most of our policies are available on our school website.



Safeguarding

Parents should be aware that the school is required to take any reasonable action to ensure the safety of all its children. In cases where the school has reason to be concerned that a child may be subject to ill treatment, neglect or other forms of abuse, the Headteacher is obliged to follow the Safeguarding procedures established by the Derbyshire Area Child Protection Committee and inform the Social Services of the concern. The school has four designated safeguarding leads: Mr James Yellop, Mr Adam Thurgood, Miss Rachel Tittershill and Mrs Kirsty Shepherd.

Equal Opportunities

Firfield Primary School is fully committed to equal opportunities for all in accordance with Derbyshire County Council Guidelines. The Governing Body ensures that all employees and children are treated fairly and equally, regardless of disability, gender, marital status, race, colour, creed and ethnic or national origin.

Pupils with Disabilities

The school has a detailed three year accessibility plan which includes the access and provision for children and staff with disabilities.

This plan ensures that provision is in place/planned and ready for the adult/ child on admission to school and that the facilities and support required are appropriate for that individual. Any adult/child in school with a disability will be catered for and treated equally and inclusively as outlined in the Equal Opportunities Policy and Special Education Needs Policy.

GDPR

The General Data Protection Regulations are about protecting people of all ages in the modern information age. Within schools, the GDPR affects everyone; staff, parents, children and volunteers. In many areas, consent is not required as schools have a duty to keep children safe and deliver a high standard of education; however, where consent is needed, you will be asked for it in a clear manner and allowed to remove it if you wish. Currently, schools hold a range of data such as;

- Education data*
- Medical data*
- Parent data*
- Staff employment data*
- Safeguarding data*
- SEND (Special Needs) data*
- Contracts with suppliers*
- School meals data*

General Information

Class Organisation

There are 14 classes in the school. Children are currently grouped in single-aged classes and the organisation of the classes may vary year on year depending on the pupil numbers in school. However, the best interests of all the children are taken into account in any reorganisation of classes.

Visits to school

Parents of children already in school can see the class teacher with quick queries and messages before and after school or via the class email or Class Dojo. If a longer discussion is required, it is best to make an appointment.

School Clubs

Children can participate in a range of sports and academic clubs during lunchtime and after school.

Breakfast & After School Clubs (WRAP Club)

The school offers a daily breakfast and after school club which operates from 7.30 a.m. to 8.50 a.m. and from 3.30 p.m. to 6.00 p.m. respectively. The club provides a range of activities in a fun and safe environment and are run by members of school staff. Charges apply for these services.

Further information is available from the school office.



School meals

Derbyshire County Council provides a daily lunch service in school which is available to all children.

The menus are carefully planned and are nutritionally healthy and well balanced. There is always a choice (including vegetarian) and any special dietary requirements can be catered for. In this instance, please notify the school office.

Menu plans are sent out to parents twice per year and the daily menu board outside the hall can be viewed by all children and parents. We do encourage the children to try new foods, although there is no undue pressure put upon your child. Independent healthy choices are encouraged and these are rewarded with stickers. Children are also rewarded for showing good table manners and the school operates 'Lunchtime Helpers' whereby older children help the younger children at lunchtimes.

The class teacher will be informed if your child is not eating their meal and this information will then be passed onto parents. Children who have a school meal are also offered water, juice or milk to drink.

Dinner money is to be paid through the Parent Pay system (which is an online communication and payment system). When children start at the school, parents will receive an activation letter including information on how to use the system. Parents can book up to 100 days in advance (provided money is in the account) or at the latest by 8:30am each morning. Infant children are entitled to universal free school meals.

Free School Meals

We appreciate that this year will be a difficult year for everyone and some families may find it harder to manage their finances. We would encourage any family who find themselves in this position to consider applying for free school meals.

Application forms for free school meals can be completed online at www.derbyshire.gov.uk and search for free school meals.

Drinks and snacks

We would ask that all children bring a bottle of fresh water (or water infused with fruit) to school daily in a clear plastic bottle, to ensure the children are well hydrated (which also keeps their brains active). We also ask that this is a sports top bottle and not a screw top as these are easily spilt. Please ensure the water bottle is clearly named and that it contains only water (or fruit infused water), *no fizzy drinks or squash are allowed.*

All Key Stage 1 children will be offered a piece of fresh fruit daily. This is part of the Free Fruit for Schools Scheme. The fruit is prepared daily by a group of helpers. We would also ask that KS2 children bring fruit daily from home to eat at break time too in order to increase fruit intake and sustain energy and concentration levels.



Fresh or dried fruit is permitted, but nuts, crackers etc are not.

As part of our Healthy Schools Status, we ask that parents do not send in sweets to give out on birthdays. Thank you for your support. In KSI, birthdays are celebrated as part of the Friday Celebration Assembly and we try to celebrate special occasions as much as we can.

Clothing

We have a school dress code in school and the details of the items can be found below. Items can be purchased from Uniformality (Borrowash), Morleys (Chilwell), Just Schoolwear (Long Eaton) or online at Marks and Spencer. Alternatively, items can be purchased from many department stores and supermarkets or can be homemade (knitted jumpers) or purchased second hand from the PTA.

Please ensure all clothing is clearly named as items can go astray and cannot be reunited with their owner due to names not being in clothes. Please check labels weekly as wash cycles frequently wash away names! Thank you!

Winter uniform

Dark green cardigan or jumper

Yellow polo shirt

Mid grey skirt/pinafore dress or trousers

Grey/black or white tights or socks

Black, sensible school shoes.

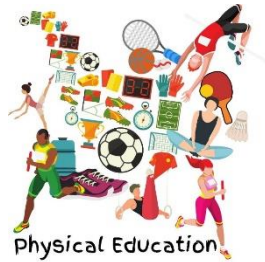
Summer uniform

Items as shown on the left, or:

Green or yellow gingham dress

Grey mid length shorts/culottes

Children will also require a school coat with a hood for wet weather whilst sun hats are advisable for the warmer weather. Suitable hair styling should be encouraged in school. For example, no hair dyes or extravagant hairstyles - mowhawks or shaved patterns in hair.



P.E. Requirements

Indoor

Black plimsolls

Black P.E. shorts/'skorts'

Plain white T-shirt

Suitable trainers

Plain white T-shirt

A plain blue/black tracksuit or
dark jogging trousers

Outdoor

A blue/black tracksuit top or
fleece

No watches, jewellery or hard headbands of any kind should be worn during P.E.

If your child has pierced ears, please ensure only studs are worn to school. These will need to be taken out for P.E. or covered with tape/plasters for safety.

Travel Plan

The school strives to build positive relationships within the community and one way to do this is to encourage all parents to walk to school. We do appreciate that this is not always possible so in order to alleviate traffic around the school, we have drawn up a map of the local area which shows footpaths, crossing patrols and street parking within walking distance. We would urge parents to consider parking a little further away to help relieve congestion at busy times of the day. Please see the map below.



Please Travel Smart on your journey to school to help reduce the impact of traffic.

If you arrive by car
Please don't park on the yellow zig zag lines around school.
Please park with consideration for our neighbours.
Could you park away from school and use the nearby footpaths shown in red to get to school?

If you can - please walk to school.
It is a great way to keep fit and it helps to keep the school gates free of cars. This makes it safer for children and is good for our neighbours and the environment.

There are bus routes around school.
● = BUS STOP
For more information see:
www.derbyshire.gov.uk/transport_roads/public_transport

If you arrive by car
Could you share your car journey to help reduce the number of cars around school?
Contact school to see if we can help you find a car share partner.

If scooting or cycling to school saves a car journey why not think about travelling this way?
There is scooter and cycle parking near the school office and the ball court.
Remember if you arrive by a bicycle or scooter, please do not ride around the playground as we don't want anyone to get knocked over!

© Crown copyright and database rights 2012.
Ordnance Survey 100023251.

Home School Partnership

Parents in Partnership

The partnership between the child, parents and school is one which we consider being of the utmost importance, and it is our aim as a school to develop and strengthen these links. This is seen as a continuous process. Parents/carers are always very welcome in the school and any involvement whether on a regular or occasional basis is very much encouraged and appreciated.

Please note that in line with County and School's 'Safe Guarding' Procedures, all parents/carers wishing to help in school will be required to undergo a full Police Clearance check (DBS check) first.

There is a home/school agreement which is offered to every child and parent for their signatures. There are many events throughout the year which all parents are invited to.

These include:

- *Open evenings*
- *Concerts and performances*
- *Theme days*
- *Educational visits*
- *Fun days*
- *Clubs*
- *Workshops/meetings*

Parents support the school in a variety of ways;

- *Hearing reading*
- *Helping on trips and in class*
- *Supporting our Business Enterprise curriculum*
- *Preparation for parties and fun days*
- *Supporting swimming lessons and other sporting fixtures*

Staff are always very willing to meet individual parents at any time agreed to give advice on ways in which help can be given.

Parents/Teachers' Association

There is a thriving Parents/Teachers' Association in school whose main function is to raise funds to support the work of the school. All parents are automatically members and are encouraged to take an active role in supporting the committees and the events. A sense of humour and an ability to have fun as well as do some hard work are the main requirements!

Details of events and meetings are sent home in the P.T.A. newsletters and are also displayed on the P.T.A. notice board in the playground.



If you decide that Firfield Primary School is your preferred choice, then please complete the admissions form online at: www.derbyshire.gov.uk stating that it is your first choice.

We hope that you and your child will be extremely happy at Firfield Primary School and we very much look forward to working with you. Further information about our school can be found on our school website and by reading our latest Ofsted report.

If you have any questions, please don't hesitate to contact the school.

School calendar 2023/24



August 2023							
wk	Mo	Tu	We	Th	Fr	Sa	Su
31		1	2	3	4	5	6
32	7	8	9	10	11	12	13
33	14	15	16	17	18	19	20
34	21	22	23	24	25	26	27
35	28	29	30	31			

September 2023							
wk	Mo	Tu	We	Th	Fr	Sa	Su
35					1	2	3
36	4	5	6	7	8	9	10
37	11	12	13	14	15	16	17
38	18	19	20	21	22	23	24
39	25	26	27	28	29	30	

October 2023							
wk	Mo	Tu	We	Th	Fr	Sa	Su
39							1
40	2	3	4	5	6	7	8
41	9	10	11	12	13	14	15
42	16	17	18	19	20	21	22
43	23	24	25	26	27	28	29
44	30	31					

November 2023							
wk	Mo	Tu	We	Th	Fr	Sa	Su
44			1	2	3	4	5
45	6	7	8	9	10	11	12
46	13	14	15	16	17	18	19
47	20	21	22	23	24	25	26
48	27	28	29	30			

December 2023							
wk	Mo	Tu	We	Th	Fr	Sa	Su
48					1	2	3
49	4	5	6	7	8	9	10
50	11	12	13	14	15	16	17
51	18	19	20	21	22	23	24
52	25	26	27	28	29	30	31

January 2024							
wk	Mo	Tu	We	Th	Fr	Sa	Su
1	1	2	3	4	5	6	7
2	8	9	10	11	12	13	14
3	15	16	17	18	19	20	21
4	22	23	24	25	26	27	28
5	29	30	31				

February 2024							
wk	Mo	Tu	We	Th	Fr	Sa	Su
5				1	2	3	4
6	5	6	7	8	9	10	11
7	12	13	14	15	16	17	18
8	19	20	21	22	23	24	25
9	26	27	28	29			

March 2024							
wk	Mo	Tu	We	Th	Fr	Sa	Su
9					1	2	3
10	4	5	6	7	8	9	10
11	11	12	13	14	15	16	17
12	18	19	20	21	22	23	24
13	25	26	27	28	29	30	31

April 2024							
wk	Mo	Tu	We	Th	Fr	Sa	Su
14	1	2	3	4	5	6	7
15	8	9	10	11	12	13	14
16	15	16	17	18	19	20	21
17	22	23	24	25	26	27	28
18	29	30					

May 2024							
wk	Mo	Tu	We	Th	Fr	Sa	Su
18			1	2	3	4	5
19	6	7	8	9	10	11	12
20	13	14	15	16	17	18	19
21	20	21	22	23	24	25	26
22	27	28	29	30	31		

June 2024							
wk	Mo	Tu	We	Th	Fr	Sa	Su
22					1	2	
23	3	4	5	6	7	8	9
24	10	11	12	13	14	15	16
25	17	18	19	20	21	22	23
26	24	25	26	27	28	29	30

July 2024							
wk	Mo	Tu	We	Th	Fr	Sa	Su
27	1	2	3	4	5	6	7
28	8	9	10	11	12	13	14
29	15	16	17	18	19	20	21
30	22	23	24	25	26	27	28
31	29	30	31				

Denotes Bank holidays
 Denotes School holiday dates
 195 days – including up to 5 days to be taken

School calendar 2024/25



August 2024							
Wk	Mo	Tu	We	Th	Fr	Sa	Su
31				1	2	3	4
32	5	6	7	8	9	10	11
33	12	13	14	15	16	17	18
34	19	20	21	22	23	24	25
35	26	27	28	29	30	31	

September 2024							
Wk	Mo	Tu	We	Th	Fr	Sa	Su
35							1
36	2	3	4	5	6	7	8
37	9	10	11	12	13	14	15
38	16	17	18	19	20	21	22
39	23	24	25	26	27	28	29
40	30						

October 2024							
Wk	Mo	Tu	We	Th	Fr	Sa	Su
40		1	2	3	4	5	6
41	7	8	9	10	11	12	13
42	14	15	16	17	18	19	20
43	21	22	23	24	25	26	27
44	28	29	30	31			
45							

November 2024							
Wk	Mo	Tu	We	Th	Fr	Sa	Su
44					1	2	3
45	4	5	6	7	8	9	10
46	11	12	13	14	15	16	17
47	18	19	20	21	22	23	24
48	25	26	27	28	29	30	

December 2024							
Wk	Mo	Tu	We	Th	Fr	Sa	Su
48							1
49	2	3	4	5	6	7	8
50	9	10	11	12	13	14	15
51	16	17	18	19	20	21	22
52	23	24	25	26	27	28	29
1	30	31					

January 2025							
Wk	Mo	Tu	We	Th	Fr	Sa	Su
1			1	2	3	4	5
2	6	7	8	9	10	11	12
3	13	14	15	16	17	18	19
4	20	21	22	23	24	25	26
5	27	28	29	30	31		

February 2025							
Wk	Mo	Tu	We	Th	Fr	Sa	Su
5						1	2
6	3	4	5	6	7	8	9
7	10	11	12	13	14	15	16
8	17	18	19	20	21	22	23
9	24	25	26	27	28		

March 2025							
Wk	Mo	Tu	We	Th	Fr	Sa	Su
9						1	2
10	3	4	5	6	7	8	9
11	10	11	12	13	14	15	16
12	17	18	19	20	21	22	23
13	24	25	26	27	28	29	30
14	31						

April 2025							
Wk	Mo	Tu	We	Th	Fr	Sa	Su
14		1	2	3	4	5	6
15	7	8	9	10	11	12	13
16	14	15	16	17	18	19	20
17	21	22	23	24	25	26	27
18	28	29	30				

May 2025							
Wk	Mo	Tu	We	Th	Fr	Sa	Su
18				1	2	3	4
19	5	6	7	8	9	10	11
20	12	13	14	15	16	17	18
21	19	20	21	22	23	24	25
22	26	27	28	29	30	31	

June 2025							
Wk	Mo	Tu	We	Th	Fr	Sa	Su
22							1
23	2	3	4	5	6	7	8
24	9	10	11	12	13	14	15
25	16	17	18	19	20	21	22
26	23	24	25	26	27	28	29
27	30						

July 2025							
Wk	Mo	Tu	We	Th	Fr	Sa	Su
27		1	2	3	4	5	6
28	7	8	9	10	11	12	13
29	14	15	16	17	18	19	20
30	21	22	23	24	25	26	27
31	28	29	30	31			

Denotes Bank holidays

Denotes School holiday dates

195 days – including up to 5 days to be taken